

sollysta

white moulded and grid wiring accessories

Style with substance

Sollysta has been designed to inspire confidence. Its modern, yet soft styling blends with today's interiors and hints at its reliability. Acting as the link to power and lighting, whether for home entertainment or everyday tasks, you must have confidence in the quality of wiring accessories.

They are a part of our everyday life and are always visible. Style and substance are a must. Sollysta's fresh, rounded appearance suggests an understated quality that is confirmed when you use them.

Step closer and you will not be disappointed. Attention to detail is obvious, even the rockers have a subtle curved profile with rounded edges. Set in a slight indentation they suggest a softness reminiscent of furnishings.

Take a moment to switch the rocker and you will notice its ergonomics. Its shape feels comfortable and you will be rewarded with a solid click, providing a positive confirmation that you have completed the switching action.

Small details we know, but this is what sets sollysta apart.



Wall Switches	7.10
Controls	7.10
Isolator Switches	7.11
Socket Outlets	7.11
Double Pole Switches	7.12
Cooker Control Unit	7.13
Fused Connection Units	7.13
Outlet Plates	7.14
Shaver Socket	7.14
Telephone and Data	7.15
TV and Satellite	7.15
Euro Frontplates and Modules	7.16
Ceiling Switches	7.17
Pattress Boxes	7.19
Grid	7.20





sollysta

elegant functionality

First impressions count. When you first step into a building whether it is a home or an office you form an impression. That impression could make the difference between a building remaining empty or not.

Makeovers and advanced technology have transformed the way that we use electricity. Wiring accessories are a vital link in how we use a space, both for leisure and work.



Once, a wall switch and a twin switched socket might have sufficed. Now our demand for both power and data has multiplied.

As their numbers increase, so does the need for them to look the part. Aesthetics are vital in the decision making process.

At the same time you need to be confident that wiring accessories are safe and continue to function.

You need to feel assured that the range will meet all of your needs. From wall switches, to twin switch sockets, RJ45 outlets to grid systems, sollysta will perform beautifully.

Take a closer look at sollysta. They will grace any building and interior design. They will also exceed your performance specifications.



sollysta

beautifully safe

However attractive wiring accessories are to the eye, they remain our link to electricity. They must perform and maintain the highest levels of safety.

Safety was at the top of our agenda when we designed sollysta. The fresh white exterior is manufactured from top grade urea, which forms a tough, durable and shatter resistant barrier.

Our isolating switches do just that, they isolate the electrical supply to meet the latest standards. Our socket outlets all feature a child resistant shutter system, which will prevent access to live parts unless all three pins of a standard british 13 amp plug are in position.

We know that peace of mind is important, which is why sollysta is not just good to look at; it protects as well.



sollysta

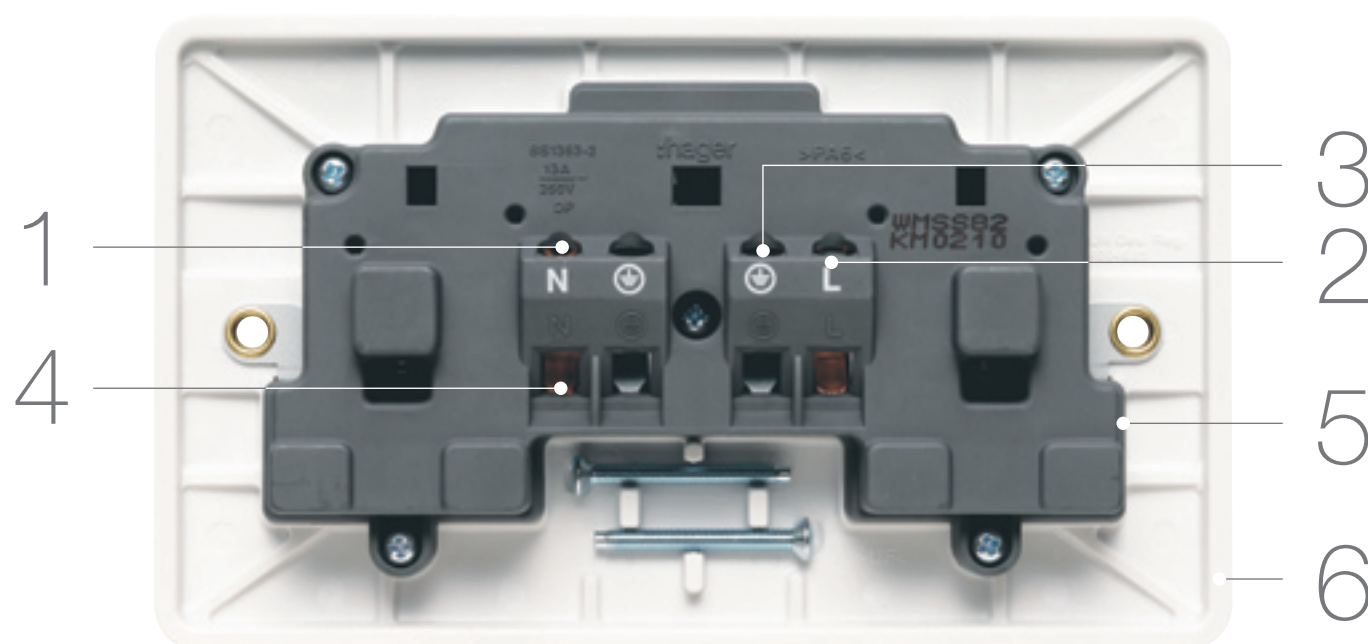
white moulded

Wiring accessories

In addition to the aesthetics for the home owner the products have been designed to make the installation easier for electrical contractors.

Terminals designed to face in the same direction, with lead-ins for wiring, backed-off screws held captive to prevent loss, wire end stops and clear identification all help make the wiring and cabling much easier.

With the shallowest projection allowing more cabling space and faceplate overlap the final fitting is quicker and provides a neater finish.



The advantages for you:

- Terminals are easy to identify, access and tighten.
- Installation time is reduced.
- Termination remains secure when the product is pushed back to the box.
- Aesthetics are excellent, even if the back box is slightly proud of the wall.

Technical data:

- Product ranges have been independently tested and certified.
- Faceplates are made from high grade urea ensuring excellent scratch and impact resistance.
- All sockets are provided with our unique safety shutter ensuring the highest levels of protection.

Quick tips

1



Terminals

The terminals all face in the same direction for ease of installation and are clearly identified.

2



Terminal screws

Terminal screws are supplied backed out to save installation time and are captive so they won't be lost.

3



Lead ins

Moulded lead-ins help to guide the driver blade to the screw head.

4



Wire end stop

A positive wire end stop provides added security of connection.

5



Projection

The range has been designed to offer the shallowest projection possible in the back box, maximising space for cabling.

6



Overlap

The faceplate overlaps the back boxes to cover any discrepancies in the plaster or wall finish.



High quality

High quality face plates provide resistance to impact and heat for maximum robustness.



Independently tested

Product ranges have been independently tested and certified.

elegant functionality

the unique neutral loop terminal



Lighting Connections

Domestic lighting circuits have for many years been connected using the 3 plate method where the loop terminal is at the ceiling rose.

Today it is increasingly likely that there is a decorative light fitting or even downlighters fitted in place of a standard pendant. These fittings are rarely provided with a neutral loop terminal.

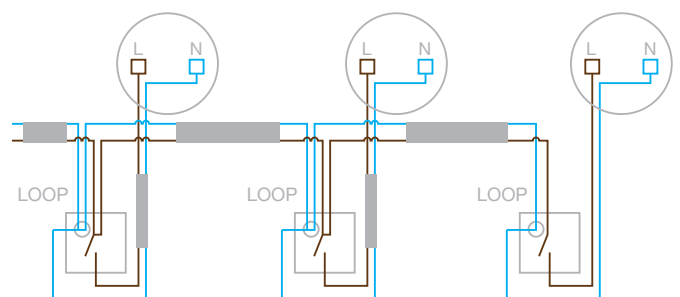
It has also become more popular to make the loop connection at the switch.

This has the advantage of the connections being accessible and at a more convenient working height.

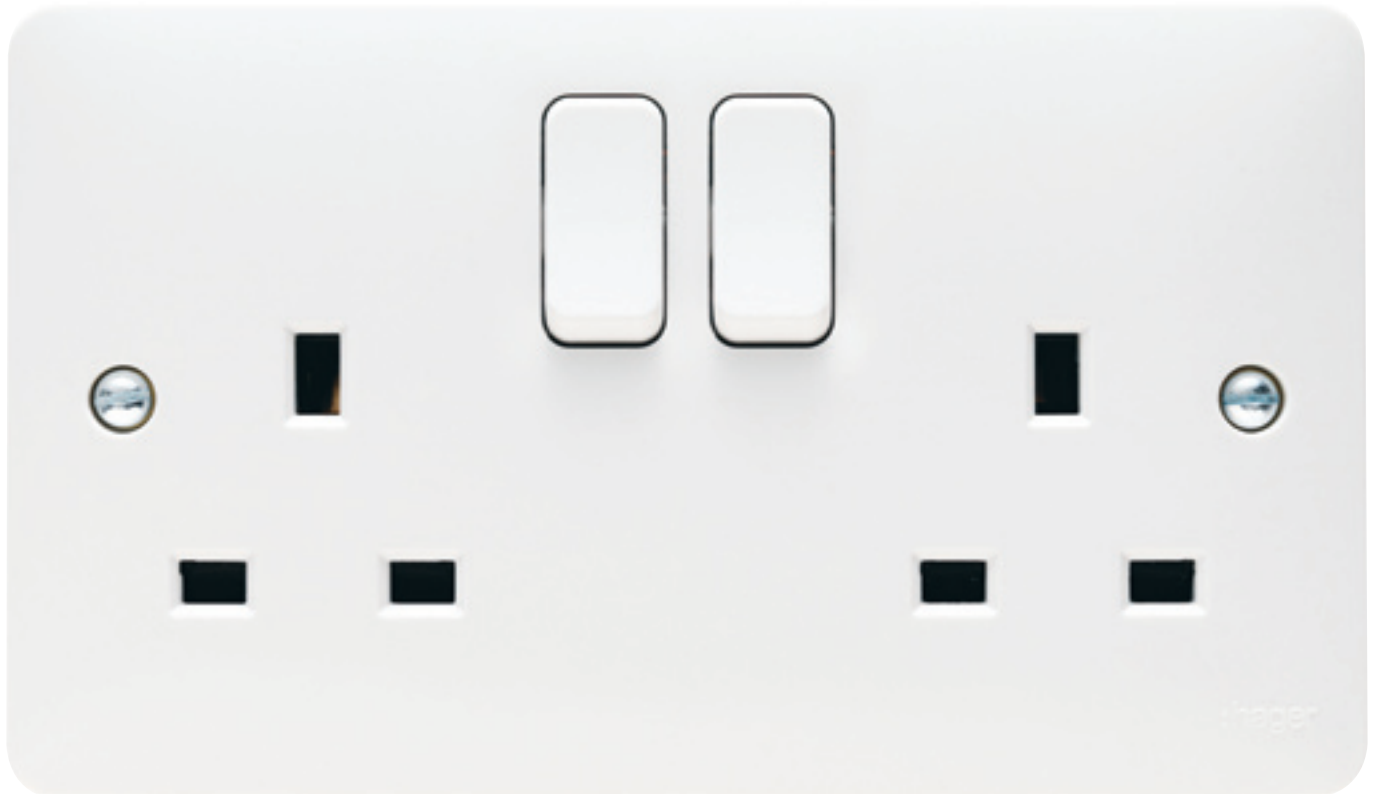
However, this leaves the problem of terminating the neutral conductor.

One solution is to connect the neutral to a connector block inside the wall box, which takes up extra space.

Another is to use the sollysta light switch which has a unique neutral loop terminal.



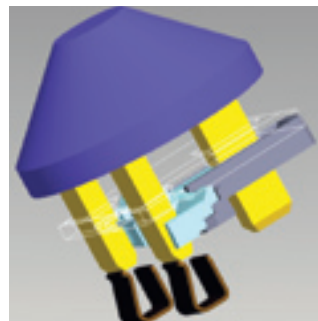
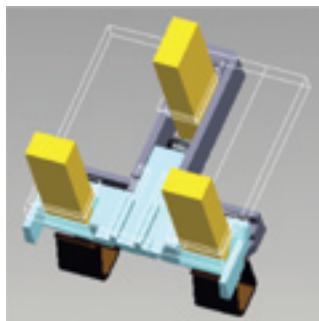
beautifully safe safety shutters



BS 1363 Socket Outlets

One of the fundamental requirements of the 17th Edition is to provide basic protection against electric shock.

Socket outlets have apertures for plug pins and therefore will have a shutter mechanism that prevents access to live parts unless the earth pin is also present and has been inserted first. This however can be either intentionally or inadvertently defeated by inserting something into the earth pin aperture.



All sollysta sockets have a unique patented shutter system that not only requires the earth pin to be inserted first, but the simultaneous insertion of the live and neutral pins as well, before the shutter mechanism is activated. This enhances the safety by making it more difficult to defeat the mechanism and therefore reducing the risk of electric shock.

- Unique patented LOOP terminal to allow Neutral looping at the switch.
- Complies with BS EN 60669-1, a.c. only.
- 'X' rated - No need to derate for fluorescent loads.
- Two way switches can be wired either 1 way or 2 way.
- Clear terminal markings:
1-way L1
2-way L2
- Capacity of each terminal
2 x 4.0mm² conductors.
- For mounting boxes see selection chart on page 7.25.
- For multigang switches use of a 25mm mounting box will provide increased wiring space.
- Supplied with M3.5 x 20mm long fixing screws.

1 & 2 Way Wall Switches, Push Switches and Intermediate Switch

Description	Cat ref.
10AX 1 Gang 1 Way Wall Switch	WMPS11
10AX 1 Gang 2 Way Wall Switch	WMPS12
10AX 2 Gang 2 Way Wall Switch	WMPS22
10AX 3 Gang 2 Way Wall Switch	WMPS32
10AX 4 Gang 2 Way Wall Switch	WMPS42
10AX 1 Gang 2 Way Wall Switch Wide Rocker	WMPS12W
10AX 2 Gang 2 Way Wall Switch Wide Rocker	WMPS22W
Intermediate Switch	WMPS16
Intermediate Switch Wide Rocker	WMPS16W
Push Switch	WMPS12R
Push Switch with Bell Symbol	WMPS12RB

Unique
N Loop
Terminal



WMPS11

Controls

- Stylish flush buttons give easy press action.
- Quick press for ON/OFF.
- Hold button down to dim or brighten light level.
- Leading edge.
- Soft start feature prolongs lamp life.
- Suitable for dimming mains and dimmable transformer extra low voltage lamps.
- Automatic switch off in the case of transformer instability protects the dimmer and the transformer.
- Supplied with M3.5 x 30mm long fixing screws.

Switch Dimmer

Description	Cat ref.
1 Gang Dimmer 400W	WMDS1
2 Gang Dimmer 250W	WMDS2
3 Gang Dimmer 250W	WMDS3
4 Gang Dimmer 250W	WMDS4



WMDS1

- Complies with BS EN 60669-2-4
- Rated conditional short circuit current (Inc) 1500A tested with Hager MTN110 6kA B curve MCB.
- Capacity of each terminal 2 x 4.0mm² conductors.
- For mounting boxes see selection chart on page 7.25.
- Supplied with M3.5 x 20mm long fixing screws.



WMPS3PIF

1 Gang 3 Pole Isolator Switches

Description	Cat ref.
3 Pole Isolator Switch	WMPS3PI
3 Pole Isolator Switch with Fan Symbol	WMPS3PIF

Socket Outlets

- Unique patented 3 part safety shutter.
- Complies with BS 1363 Part 2, a.c only.
- Double pole switching mechanism on switched sockets.
- Twin socket comes with twin earth as standard.
- All terminal screws grouped in-line and upward facing for ease of installation.
- Clear printed and engraved terminal markings.
- Capacity of each terminal: 5 x 2.5mm² conductors switched; 4 x 2.5mm² unswitched (for other sized conductors see terminal capacities on page 7.24).
- For mounting boxes see selection chart on page 7.25.
- Supplied with M3.5 x 30mm long fixing screws.



WMSS82O

13A Switched Sockets

Description	Cat ref.
1 Gang Double Pole Switched Socket	WMSS81
2 Gang Double Pole Switched Socket Dual Earth	WMSS82
2 Gang Double Pole Switched Socket Dual Earth Outboard Rockers	WMSS82O



WMS51

5A / 13A Unswitched Socket

Description	Cat ref.
5A 1 Gang Unswitched Socket	WMS51
13A 1 Gang Unswitched Socket	WMS81
13A 2 Gang Unswitched Socket Dual Earth	WMS82

- Complies with BS EN 60699-1 a.c. only.
- Cable clamp accommodates up to 1.5mm² flexible cord.
- Single screw fast fix cable clamp.
- Available with LED indicator in rocker.
- All terminal screws upward facing for ease of installation.
- Clearly printed and engraved terminal marking.
- Capacity of each terminal 2 x 6.0mm² conductors.
- For mounting boxes see selection chart on page 7.25.
- Supplied with M3.5 x 30mm long fixing screws.

20A Double Pole Switches



WMDP84N

Description	Cat ref.
20A Double Pole Switch	WMDP84
20A Double Pole Switch with Flex Outlet	WMDP84FO
20A Double Pole Switch with LED Indicator	WMDP84N
20A Double Pole Switch with LED Indicator & Flex Outlet	WMDP84FON
20A Double Pole Switch with LED Indicator marked Waterheater	WMDP85N
20A Double Pole Switch with LED Indicator & Flex Outlet marked Waterheater	WMDP85FON

50A Double Pole Switches

- Complies with BS EN 60669-1 a.c. only.
- LED indication.
- All terminal screws upward facing for ease of installation.
- Clearly printed terminal marking.
- Capacity of each terminal 2 x 6mm², 1 x 10mm².
- For mounting boxes see selection chart on page 7.25.
- Supplied with M3.5 x 30mm long fixing screws.

50A Double Pole Switches



WMDP50N

Description	Cat ref.
50A Double Pole Switch 1 Gang with LED Indicator	WMDP50N
50A Double Pole Switch 2 Gang Vertical with LED Indicator	WMDP50VN

- Complies with BS 4177.
- Switch and socket are double pole.
- Twin earth as standard.
- Available with optional LED indication.
- Main switch is suitable for isolation.
- All terminals are upward facing for ease of installation.
- Clearly printed terminal marking.
- Capacity of terminals 2 x 6.0mm², 1 x 16.0mm².
- For mounting boxes see selection chart on page 7.25.
- Supplied with M3.5 x 30mm long fixing screws.

50A Cooker Control Unit

Description	Cat ref.
50A Cooker Control Unit	WMCC50
50A Cooker Control Unit with LED Indicator	WMCC50N



WMCC50



WMCC50N

Fused Connection Units

sollysta

- Complies with BS 1363-4.
- Cable clamp accommodates up to 1.5mm² flexible cord.
- Single screw fast fix cable clamp.
- Available with LED light indicator in rocker.
- All terminal screws upward facing for ease of installation.
- Clearly printed terminal markings.
- Capacity of each terminal 2 x 6.0 mm² conductors.
- For mounting boxes see selection chart on page 7.25.
- Supplied with M3.5 x 30mm long fixing screws.

13A Switched & Unswitched FCU

Description	Cat ref.
13A FCU Switched	WMSSU83
13A FCU Switched with Flex Outlet	WMSSU83FO
13A FCU Switched with LED Indicator	WMSSU83N
13A FCU Switched with LED Indicator and Flex Outlet	WMSSU83FON
13A FCU Unswitched	WMSU83
13A FCU Unswitched with Flex Outlet	WMSU83FO



WMSSU83

- Complies with BS 5733.
- Terminal capacity:
20A 2 x 6.0mm²
45A 2 x 10.0mm² conductors
- 20A plate features 2 separate terminals for each of Line, Neutral and Earth so flexible and fixed wiring do not occupy the same terminal.
- Single screw fast fix cable clamp.
- Supplied with M3.5 x 30mm long fixing screws.
- 45A features large open brass terminals for ease of installation.
- Protective red washer must be used under cable clamp to prevent damage to cable.
- Supplied with M3.5 x 20mm long fixing screws.

Outlet Plates

Description

Cat ref.

Flex Outlet Plate 20A

WMP2FO

Cooker Cable Outlet with Terminals 45A

WMP50FO



WMP2FO

Shaver Socket

- Complies with BS EN 61558-2-5
- Capacity of each terminal 2 x 2.5mm² conductors.
- Designed for use in bathrooms and shower rooms and incorporates a double wound transformer for an earth free supply.
- Input 230V a.c. output dual voltage 230V a.c. and 115V a.c. outlets.
- Rating 20VA on either voltage.
- Primary circuit protected by a self resetting thermal overload device.
- Insertion of shaver plug automatically switches on the transformer.
- Supplied with M3.5 x 30mm long fixing screws.

Shaver Socket

Description

Cat ref.

115/230 Volt Shaver Socket

WMSO100



WMSO100

- BT sockets comply with BS EN 6312-2.
- Supplied with fitted cable tie.
- Quick connection with insulation displacement terminals.
- RJ11 has tool less quick connect terminals.
- Clearly printed terminal marking.
- Supplied with M3.5 x 20mm long fixing screws.

Telephone and Data

Description	Cat ref.
BT Master Telephone Outlet	WMBTM
BT Secondary Telephone Outlet	WMBTS
RJ11 Socket	WMRJ11
RJ45 Socket	WMRJ45
IDC tools (bag of 10)	IDCTOOL



WMBTM

TV and Satellite

- TV outlets comply with BS 3041.
- Satellite outlets comply with BS EN 50083-2.
- Fully screened.
- DAB compatible.
- Supplied with M3.5 x 20mm fixing screws.

TV and Satellite

Description	Cat ref.
Single F Type Satellite Outlet Screened	WMSAT
Single Co-Ax TV Socket Outlet Male	WMTVM
Single Co-Ax TV Socket Outlet Female	WMTVF
Double TV & FM/DAB Co-Ax Socket Outlet	WMDX
Triplexer TV, FM/DAB & Satellite Outlet	WMTX
Quadplexer TV, FM/DAB, Satellite 1 & Satellite 2 Outlet	WMQX

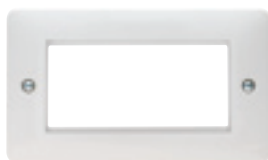


WMTVM



WMQX

- Carrier plates facilitate installation of industry standard modular data outlets.
- Easy to configure for all applications.
- Easy installation of module to plate.
- Robust retention of modules in operation.
- Quick release of modules for maintenance.



WMP4EU

Euro Style Accommodation Plates

Description	Cat ref.
1 Module	WMP1EU
2 Modules	WMP2EU
4 Modules	WMP4EU



WMMBTM

Euro Style Modules

Description	Module width	Cat ref.
BT Telephone Master Euromodule White	■	WMMBTM
BT Telephone Master Euromodule Black	■	WMMBTMB
BT Telephone Secondary Euromodule White	■	WMMBTS
BT Telephone Secondary Euromodule Black	■	WMMBTSB
RJ11 - Modem Euromodule White	■	WMMRJ11
RJ11 - Modem Euromodule Black	■	WMMRJ11B
RJ45 - Cat 6 UTP Euromodule White	■	WMMRJ45
RJ45 - Cat 6 UTP Euromodule Black	■	WMMRJ45B
Phono Plugs - Red/Black - Gold Plated Euromodule	■	WMMPP
Speaker Terminal Posts - Gold Plated Euromodule	■	WMMSP
Single IEC Female Non Isolated Euromodule White	■	WMMTVF
Single IEC Female Non Isolated Euromodule Black	■	WMMTVFB
Single IEC Male Non Isolated Euromodule White	■	WMMTVM
Single IEC Male Non Isolated Euromodule Black	■	WMMTVMB
Single Satellite F Connector Euromodule White	■	WMMSAT
Single Satellite F Connector Euromodule Black	■	WMMSATB
Single Blank Euromodule White	■	WMMB
Single Blank Euromodule Black	■	WMMBB
Diplexer - TV & FM Radio Euromodule White	■ ■	WMMDX
Diplexer - TV & FM Radio Euromodule Black	■ ■	WMMDXB
Triplexer - TV, Satellite & FM Radio Euromodule White	■ ■ ■	WMMTX
Triplexer - TV, Satellite & FM Radio Euromodule Black	■ ■ ■	WMMTXB
Quadplexer - TV, Satellite, FM Radio & Return Euromodule White	■ ■ ■ ■	WMMQX
Quadplexer - TV, Satellite, FM Radio & Return Euromodule Black	■ ■ ■ ■	WMMQXB



WMMQXB

Blank Plates

Description	Cat ref.
Single Blank Plate	WMP1
Twin Blank Plate	WMP2



WMP1

- Complies with BS EN 60669-1.
- 'X' rated - no need to derate for fluorescent loads.
- Earth terminal in base.
- Switch will operate at up to an angle of 45°.
- Pull cords 1.5m long.
- Capacity of each terminal: 2 x 1.5mm² conductors.

Light Switches

Description	Cat ref.
6A Ceiling Switch 1 Way	WMCS11
6A Ceiling Switch 2 Way	WMCS12



WMCS11

Fan Isolator Switches

- Complies with BS EN 60669-2-4
- Rated conditional short circuit current (Inc) 1500A tested with Hager MTN110 6kA B Curve MCB.
- Terminal capacity: 3 x 1.5mm²
- Supplied with M3.5 x 30mm long fixing screws.

Fan Isolator Switches

Description	Cat ref.
10A 3 Pole Ceiling Switch marked Fan & Isolator	WMCS3PIF
10A 3 Pole Ceiling Switch marked Isolator	WMCS3PI
10A 3 Pole Ceiling Switch marked Fan	WMCS3PF



WMCS3PIF

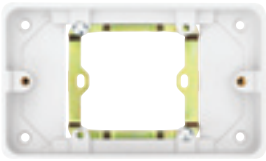
- Complies with BS EN 60669-2-4.
- Rated conditional short circuit current (Inc) 1500A tested with Hager MTN110 6kA B Curve MCB.
- Suitable for use with showers up to 11.5kW.
- Position of the contacts shown by flag indicator.
- Supplied with M3.5 x 30mm fixing screws.
- Capacity of each terminal: 1 x 16mm² conductors

Power Isolator Switch



WMCS50N

Description	Cat ref.
50A 2 Pole Isolating Ceiling Switch with LED Indicator	WMCS50N
Single Spare Pull Cord	PULLCORD



WMPB2/20

Pattress Box

Description	Cat ref.
Single 20mm Deep Moulded Box	WMPB1/20
Single 28mm Deep Moulded Box	WMPB1/28
Single 46mm Deep Moulded Box	WMPB1/46
Twin 28mm Deep Moulded Box	WMPB2/28
Twin 46mm Deep Moulded Box with Cable Clamps	WMPB2/46CC
46mm Deep Moulded Shaver Box	WMPB2/46
Twin Converter Frame	WMPB2/20

sollysta grid

Wiring accessories

In addition to the aesthetics for the home owner the grid accessories have been designed to make the installation easier for electrical contractors.

The robust frames do not distort during fixing, and the switch modules can be easily clipped in and out from the front making the installation much quicker and easier.

Due to the frame design easy access to the switch terminals is even possible when the frames are fitted and maximum cabling space is available thanks to the shallowest switches on the market.

A wide range of modules is available together with an extensive range of markings including specials through our bespoke service (contact Technical Support for further details).



The advantages for you:

- Switch modules are the shallowest in the market, maximising cable space in the back box.
- Switch modules can be wired in the hand or when clipped in to the frame.
- Frame will not bend or deform during installation.
- Aesthetics match and complement the white moulded range.

Technical data:

- All products have been independently tested and certified.
- Switches are rated at 20AX for maximum switching capability.
- Range includes fuse carriers, key switches and retractive switches.
- Faceplates are made from high grade urea ensuring excellent scratch and impact resistance.

Quick tips

1



Frames

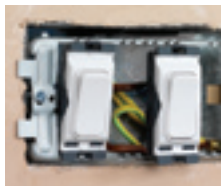
Robust frames do not distort during installation.



Shallow

The switches are the shallowest in the market to give the maximum cabling space.

2



Clip

Switch modules clip in and out of the frames from the front for easy fixing.



20AX

All switches are rated at 20AX for maximum switching capability.

3



Switch terminals

The frame design allows for easy access to the switch terminals even when fitted in the frame.



Markings

A wide range of popular markings are available, and specials are available with our bespoke marking service (contact Technical Support for further details).

4



Earth

Earth terminals are securely fixed with easy accessibility for wiring.



Wide range

The wide range of modules includes double pole and single pole switches, key switches and fuse carriers.

sollysta grid

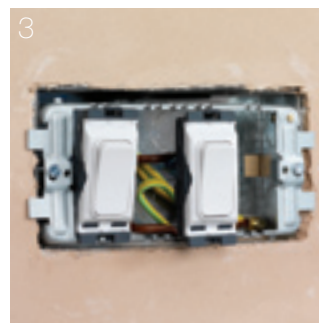
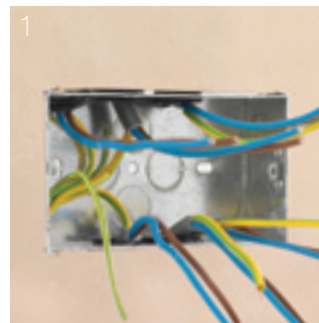


The sollysta range of grid switches are ideal for domestic and commercial applications.



Frontplates are available to complement our new range of sollysta wiring accessories.

Durability and safety have been paramount in the design and development of the sollysta grid range so that, once installed, you can have every assurance that the products will live up to your expectations.



The four step assembly process allows the installer flexibility at every stage.



Simple installation with style
Modules can easily be upgraded without the need to remove the mounting frame.

- Complies with BS EN 606691-1 switches, BS 5733 fuse carrier.
- Shallowest switch modules for ease of installation.
- Modules clip from the front for ease of installation and maintenance.
- Terminal screw can be accessed with modules clipped into frames.
- Frames locate to finished wall level.
- Frames clip to ease alignment for 6 gang and 8 gang applications.



WMGP3

Grid Plates

Description	Cat ref.
1 Gang White Moulded Plate	WMGP1
2 Gang White Moulded Plate	WMGP2
3 Gang White Moulded Plate	WMGP3
4 Gang White Moulded Plate	WMGP4
6 Gang White Moulded Plate	WMGP6
8 Gang White Moulded Plate	WMGP8



WMGF34

Grid Frames

Description	Cat ref.
1 Gang Frame	WMGF1
2 Gang Frame	WMGF2
3 / 4 Gang Frame	WMGF34



WMGSDP2/HB



WMGKS

Grid Switches

Description	Cat ref.
20AX 2 Way Single Pole Switch	WMGS12
20A Intermediate Switch	WMGS16
20A 2 Way Retractive Grid Switch	WMGS22R
20A 1 Way Double Pole Switch	WMGSDP2
20A Double Pole Key Switch	WMGKS
20A 1 Way Double Pole marked 'Cooker Hood'	WMGSDP2/CHD
20A 1 Way Double Pole marked 'Dish Washer'	WMGSDP2/DW
20A 1 Way Double Pole marked 'Extract Fan'	WMGSDP2/EF
20A 1 Way Double Pole marked 'Fridge Freezer'	WMGSDP2/FF
20A 1 Way Double Pole marked 'Freezer'	WMGSDP2/FRE
20A 1 Way Double Pole marked 'Fridge'	WMGSDP2/FRI
20A 1 Way Double Pole marked 'Hob'	WMGSDP2/HB
20A 1 Way Double Pole marked 'Heating'	WMGSDP2/HTG
20A 1 Way Double Pole marked 'Microwave'	WMGSDP2/MW
20A 1 Way Double Pole marked 'Tumble Dryer'	WMGSDP2/TD
20A 1 Way Double Pole marked 'Waste Disposal'	WMGSDP2/WD
20A 1 Way Double Pole marked 'Washing Machine'	WMGSDP2/WM
20A 1 Way Double Pole marked 'Emergency Lighting'	WMGSDP2/EL

Accessories

Description	Cat ref.
13A Fuse Carrier	WMGFU13
Blank Module	WMGB1



WMGFU13

Accessory Type	Rating	Maximum number of conductors per terminal (Solid or Stranded conductors BS 6004)						
		1.0 mm ²	1.5 mm ²	2.5 mm ²	4.0 mm ²	6.0 mm ²	10.0 mm ²	16.0 mm ²
Plate & Ceiling Accessories	10AX	4	4	3	2			
Dimmer Switches	10AX	4	3					
BS 546 Socket Outlet	5A	3	3	3	2	2		
Shaver Socket	10A	4	3	2				
Fused Connection Units	13A			3	2	2		
BS 1363 Socket Outlets	13A			3	3	2		
BS546 Socket Outlet	15A			3	3	2		
Flex Outlet Plates	20A	5	4	3	2	2		
Double Pole Switches	20A			3	2	2	1	
Double Pole Switches	45/50A				3	2	1	1
Cooker Control Unit	45A				3	2	1	1
Cooker Connection Outlet	45A				2	3		
Grid Switches	20AX	4	4	3	2			

Accessory Type	Rating	Maximum number of conductors per terminal (Flex conductors BS 6500)						
		1.0 mm ²	1.5 mm ²	2.5 mm ²	4.0 mm ²	6.0 mm ²	10.0 mm ²	16.0 mm ²
Plate & Ceiling Accessories	10AX							
Dimmer Switches	10AX							
BS 546 Socket Outlet	5A							
Shaver Socket	10A							
Fused Connection Units	13A	1	1	1	1	1	1	1
BS 1363 Socket Outlets	13A							
BS546 Socket Outlet	15A							
Flex Outlet Plates	20A	1	1	1	1	1	1	1
Double Pole Switches	20A	1	1	1	1	1	1	1
Double Pole Switches	45/50A							
Cooker Control Unit	45A	1	1	1	1	1	1	1
Cooker Connection Outlet	45A							
Grid Switches	20AX							

Product Reference	Product Description	Standard Surface Box Reference	Deep Surface Box Reference
WMPS11	10AX 1 Gang 1 Way Wall Switch	WMPB1/20	WMPB1/28
WMPS12	10AX 1 Gang 2 Way Wall Switch	WMPB1/20	WMPB1/28
WMPS12W	10AX 1 Gang 2 Way Wall Switch Wide Rocker	WMPB1/20	WMPB1/28
WMPS22W	10AX 2 Gang 2 Way Wall Switch Wide Rocker	WMPB1/20	WMPB1/28
WMPS22	10AX 2 Gang 2 Way Wall Switch	WMPB1/20	WMPB1/28
WMPS32	10AX 3 Gang 2 Way Wall Switch	WMPB1/20	WMPB1/28
WMPS42	10AX 4 Gang 2 Way Wall Switch	WMPB2/28	WMPB2/28
WMPS16	Intermediate Switch	WMPB1/20	WMPB1/28
WMPS12RB	Push Switch with Bell Symbol	WMPB1/20	WMPB1/28
WMPS12R	Push Switch	WMPB1/20	WMPB1/28
WMDS1	1 Gang Dimmer	WMPB1/28	WMPB1/46
WMDS2	2 Gang Dimmer	WMPB1/28	WMPB1/46
WMDS3	3 Gang Dimmer	WMPB2/28	WMPB2/46
WMWSD4	4 Gang Dimmer	WMPB2/28	WMPB2/46
WMPS3PIF	3 Pole Isolator Switch with Fan Symbol	WMPB1/20	WMPB1/28
WMPS3PI	3 Pole Isolator Switch	WMPB1/20	WMPB1/28
WMSO100	115/230V Shaver Outlet	WMPB2/46	N/A
WMSS81	1 Gang Double Pole Switched Socket	WMPB1/28	WMPB1/46
WMSS82	2 Gang Double Pole Switched Socket Dual Earth	WMPB2/28	WMPB2/46
WMSS82O	2 Gang Double Pole Switched Outlet Outboard Rockers	WMPB2/28	WMPB2/46
WMS81	13A 1 Gang Unswitched Socket	WMPB1/28	WMPB1/46
WMS82	13A 2 Gang Unswitched Socket Dual Earth	WMPB2/28	WMPB2/46
WMS51	5A 1 Gang Unswitched Socket	WMPB1/28	WMPB1/46
WMDP84	20A Double Pole Switch	WMPB1/28	WMPB1/46
WMDP84FO	20A Double Pole Switch with Flex Outlet	WMPB1/28	WMPB1/46
WMDP84N	20A Double Pole Switch with LED Indicator	WMPB1/28	WMPB1/46
WMDP84FON	20A Double Pole Switch with LED Indicator & Flex Outlet	WMPB1/28	WMPB1/46
WMDP85N	20A Double Pole Switch with LED Indicator marked Water Heater	WMPB1/28	WMPB1/46
WMDP85FON	20A Double Pole Switch with LED Indicator & Flex Outlet marked Water Heater	WMPB1/28	WMPB1/46
WMP2FO	Flex Outlet Plate 20A	WMPB1/20	WMPB1/28
WMDP50N	50A Double Pole Switch 1 Gang with LED Indicator	WMPB1/46	N/A
WMDP50VN	50A Double Pole Switch 2 Gang Vertical with LED Indicator	WMPB2/46	N/A
WMSSU83	13A Fused Connection Unit Switched	WMPB1/28	WMPB1/46
WMSSU83FO	13A Fused Connection Unit Switched with Flex Outlet	WMPB1/28	WMPB1/46
WMSSU83N	13A Fused Connection Unit Switched with LED Indicator	WMPB1/28	WMPB1/46
WMSSU83FON	13A Fused Connection Unit Switched with LED Indicator & Flex Outlet	WMPB1/28	WMPB1/46
WMSU83	13A Fused Connection Unit Unswitched	WMPB1/28	WMPB1/46
WMSU83FO	13A Fused Connection Unit Unswitched with Flex Outlet	WMPB1/28	WMPB1/46
WMCC50	50A Cooker Control Unit	WMPB2/46CC	N/A
WMCC50N	50A Cooker Control Unit with LED Indicator	WMPB2/46CC	N/A
WMP50FO	Cooker Cable Outlet with Terminals	WMPB1/46	N/A
WMP1	Single Blank Plate	WMPB1/20	WMPB1/28
WMP2	Twin Blank Plate	WMPB2/28	N/A
WMBTM	BT Master Telephone Outlet	WMPB1/28	WMPB1/46
WMBTS	BT Secondary Telephone Outlet	WMPB1/28	WMPB1/46
WMRJ11	RJ11 Socket	WMPB1/28	WMPB1/46
WMRJ45	RJ45 Socket	WMPB1/28	WMPB1/46
WMSAT	Single F Type Satellite Outlet Screened	WMPB1/28	WMPB1/46
WMTVM	Single CO-AX TV Socket Outlet Male	WMPB1/28	WMPB1/46
WMTVF	Single CO-AX TV Socket Outlet Female	WMPB1/28	WMPB1/46
WMDX	Double TV & FM/DAB CO-AX Socket Outlet	WMPB1/28	WMPB1/46
WMTX	TriplexerTV & FM/DAB & SAT Outlet	WMPB1/28	WMPB1/46
WMQX	Quadplexer TV & FM/DAB & SAT1 & SAT2	WMPB1/28	WMPB1/46